

# FOR REFERENCE ONLY

**Applicability:**

CESSNA  
T310P, T310Q, T310R  
340, 340A  
401, 401A, 401B, 402, 402A, 402B, 402C  
414, 414A

**Drawing:** AFC-W310**Revision:** B**Date:** 06/01/05**Airwolf Parts List No. AFC-W310-A**

<b>Index</b>	<b>Part Number</b>	<b>Description</b>	<b>Quantity</b>
01.	W-3000	AirSep Assy	(1)
02.	W-2037	Bracket	(1)
03.	W-2011	Bracket	(1)
04.	W-2036	Brace	(1)
05.	W-2032	Tube	(1)
06.	W-2150	Doubler	(1)
07.	MIL6000-5/8	Hose, 5/8" ID	(21")
08.	MIL6000-5/16	Hose, 5/16" ID	(6")
09.	MIL6000-3/4	Hose, 3/4" ID	(5")
10.	QS100M12H	Hose Clamp, 3/4"	(2)
11.	MM-5	Hose Clamp, 3/8"	(4)
12.	QS100M10H	Hose Clamp, 5/8"	(2)
13.	QS100M24H	Hose Clamp, 1-1/2"	(1)
14.	QS100M72H	Hose Clamp, 4-1/2"	(1)
15.	W-2100	"C" Channel	(10")
16.	MS35489-20	Grommet, 3/4" ID	(1)
17.	AN526C-1032R10	Screw, #10 X 5/8" Long	(4)
18.	MS20365-1032A	Locknut, #10	(5)
19.	AN960-10	Flat Washer, #10	(5)
20.	AN526C-1032R8	Screw, #10 X 1/2" Long	(1)
21.	MS21919WDG-30	Adel Clamp. 1-3/4"	(1)
22.	CAT-7	Duct, 1-3/4" ID	(18")

# FOR REFERENCE ONLY

**Applicability:**

CESSNA  
421A, 421B, 421C

**Drawing:** AFC-W310**Revision:** B**Date:** 06/01/05**Airwolf Parts List No. AFC-W310-C**

<b>Index</b>	<b>Part Number</b>	<b>Description</b>	<b>Quantity</b>
01.	W-3000	AirSep Assy	(1)
02.	W-2037	Bracket	(1)
03.	W-2011	Bracket	(1)
04.	W-2036	Brace	(1)
05.	W-2032	Tube	(1)
06.	W-2150	Doubler	(1)
07.	MIL6000-5/8	Hose, 5/8" ID	(21")
08.	MIL6000-5/16	Hose, 5/16" ID	(6")
09.	MIL6000-3/4	Hose, 3/4" ID	(5")
10.	QS100M12H	Hose Clamp, 3/4"	(2)
11.	MM-5	Hose Clamp, 3/8"	(4)
12.	QS100M10H	Hose Clamp, 5/8"	(2)
13.	QS100M24H	Hose Clamp, 1-1/2"	(1)
14.	QS100M72H	Hose Clamp, 4-1/2"	(1)
15.	W-2100	"C" Channel	(10")
16.	MS35489-20	Grommet, 3/4" ID	(1)
17.	AN526C-1032R10	Screw, #10 X 5/8" Long	(4)
18.	MS20365-1032A	Locknut, #10	(5)
19.	AN960-10	Flat Washer, #10	(5)
20.	AN526C-1032R8	Screw, #10 X 1/2" Long	(1)
21.	MS21919WDG-30	Adel Clamp. 1-3/4"	(1)
22.	CAT-7	Duct, 1-3/4" ID	(18")

**Applicability:**

CESSNA  
T310P, T310Q, T310R  
340, 340A  
401, 401A, 401B, 402, 402A, 402B, 402C  
414, 414A  
421A, 421B, 421C

Drawing: AFC-W310  
Revision: B  
Date: 06/01/05

*Note A: Some hoses or wires may have to be rerouted so the air/oil separator will fit into position.  
Reference and material per AC 43.13-1B & 2A.*

**WARNING: ALL HOSES SHALL BE LOCATED AT LEAST 4.0" FROM ANY HEAT SOURCE LIKELY TO CAUSE VAPORIZATION OF THE OIL.**

01. Remove all engine breather , vacuum pump outlet, and existing oil separator (if applicable) components. Retain fittings, the oil return line to the scavenge pump, and the 3/4" hose and clamps at the engine breather.
02. Place the 4-1/2" clamp between the W-2011 Bracket and the W-2037 Bracket.
03. Install the W-2011 Bracket to the W-2037 Bracket using (3) each of items 25, 26, 27, 28, leave the lower right hole open, and mount the bracket with the notches in the flanged edges pointing up. Position the clamp at the bottom of the notches.
04. Remove the upper (3) screws on the left side of the oil cooler. Match drill the (3) holes onto the flanged edge of the Adapter Bracket.
05. Secure the Adapter Bracket to the oil cooler with existing hardware.
06. Install the brace, (Item 6) between the lower right hole in the Universal Bracket and the lower left stud on the upper left accessory pad (see drawing). Secure with existing hardware and 1 ea. of #10 screw, washer and locknut.
07. Remove the Wilkie button plug from the hole in the rear baffle, to the left of the oil cooler. Enlarge the hole to 1-3/8" diameter. Install the -20 grommet into the hole.
08. Slip the aft end of the breather tube W-2032 through the -20 grommet. With the wider occluded angle forward, secure the other end at the breather using existing hose and hardware.

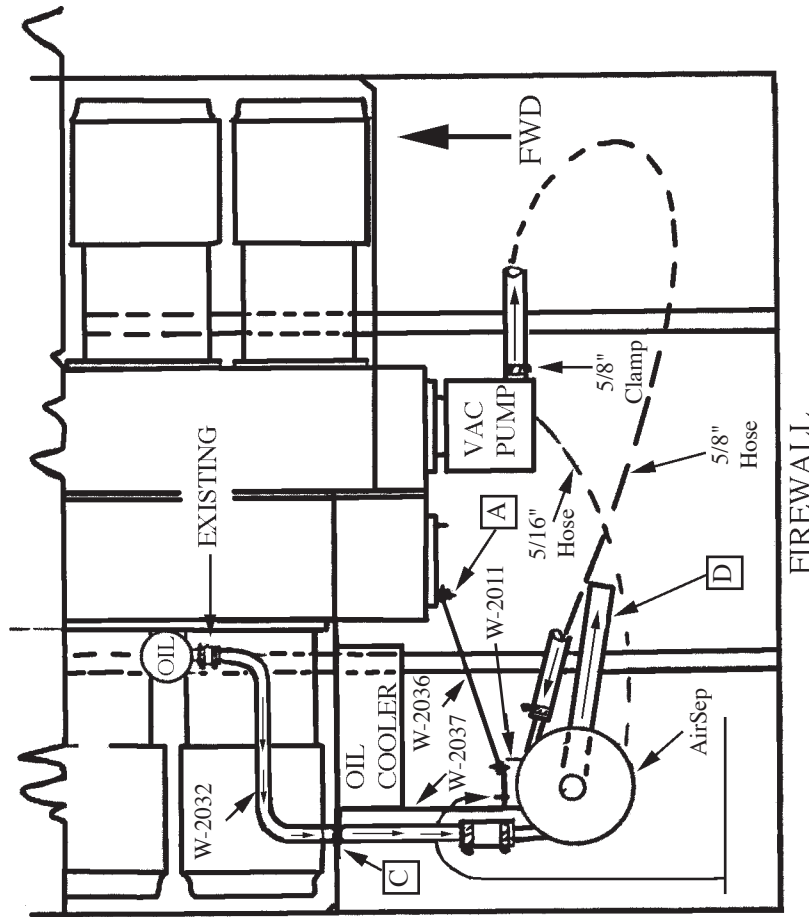
*Note B: Assure sufficient clearance from #2 cylinder fins.*

09. Slide the 3/4" hose over the aft end of the breather tube and secure with a 3/4" clamp.
10. Install the AirSep on the W-2011 bracket, with the 3/4" inlet of the AirSep forward, toward the breather tube. Connect the 3/4" hose between the AirSep and the breather tube and secure all clamps.
11. Connect the 5/8" hose between the vacuum pump outlet and the 1/2" inlet to the AirSep. Secure both ends with 5/8" clamps.
12. Connect the 1/4" hose from bottom of the AirSep to the existing scavenge line (see drawings) and secure both ends with 5/16" clamps.
13. Connect the 1-3/4" duct to the bottom of the Air Sep, and secure with 1-1/2" clamps
14. Route the lower end of the duct into the lower center nacelle area, away from the cowl flap area. Secure it using good shop practices.
15. Determine weight & balance, initiate Form 337, and update the equipment list.

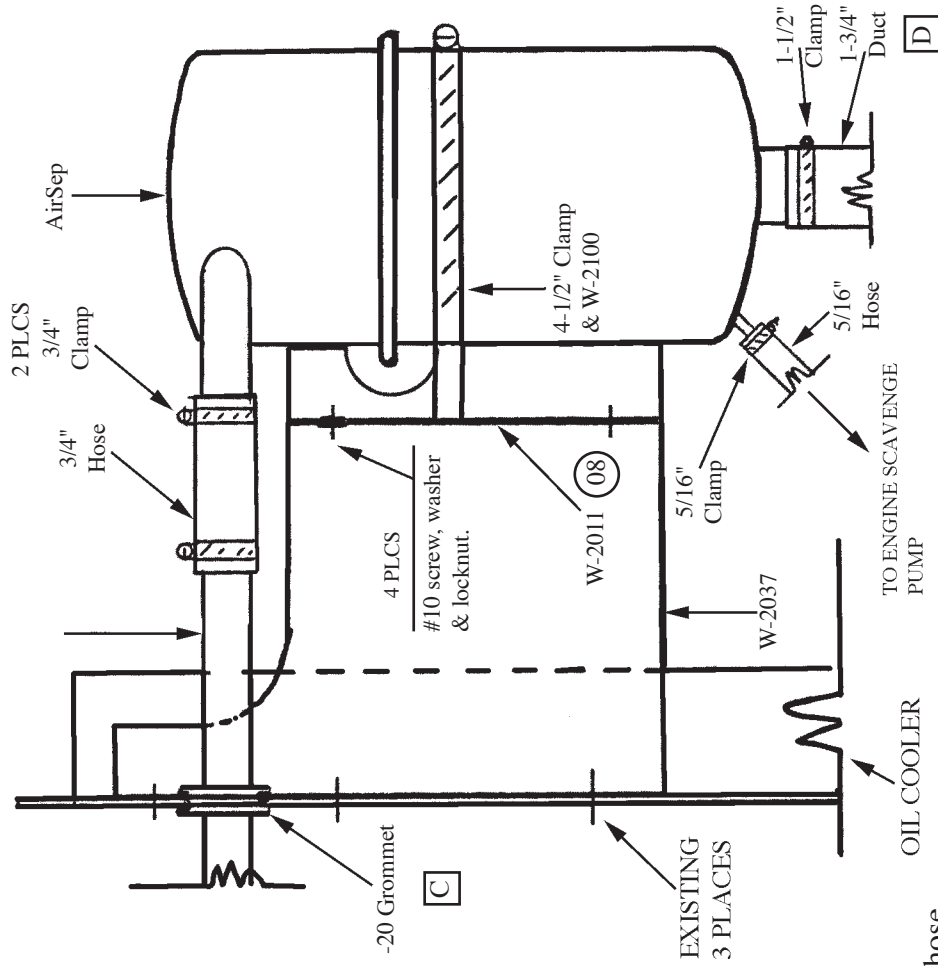
Applicability:

CESSNA  
T310P, T310Q, T310R  
340, 340A  
401, 401A, 401B, 402, 402A, 402B, 402C  
414, 414A  
421A, 421B, 421C

Drawing: AFC-W310  
Revision: B  
Date: 06/01/05



- [A] Remove accessory drive pad nut and install brace at that point.
- [B] Remove drain hose used on original separator and install new longer hose
- [C] Enlarge existing plugged hole in rear baffle to 1-1/16" and install grommet.
- [D] Route CAT-4 duct towards center of engine compartment and secure using good shop practices.



FORWARD

**WARNING: ALL HOSES SHALL BE LOCATED AT LEAST 4.0" FROM ANY HEAT SOURCE LIKELY TO CAUSE VAPORIZATION OF THE OIL.**