

Applicability: CESSNA
205, 205A
206
207, 207A

[S/N 1 -> 437]

Drawing: AFC-W317
Revision: B
Date: 06/01/05

Airwolf Parts List No. AFC-W317

<u>Index</u>	<u>Part Number</u>	<u>Description</u>	<u>Quantity</u>
01.	W-3002	AirSep Assy, 3/4" Breather, 1/2" Vacuum	(1)
02.	W-2031	Air Syphon Pump	(1)
03.	W-2018	Air-Tee	(1)
04.	W-2041	Brace	(1)
05.	W-2042	Doubler Plate	(1)
06.	W-2011	Bracket	(1)
07.	AN526C-1032R10	Screw, #10 X 5/8" Long	(8)
08.	AN960-10	Flat Washer, #10	(8)
09.	MS20365-1032A	Locknut, #10	(8)
10.	W-2043	Flange	(1)
11.	AN526C-832R8	Screw, #8 X 1 1/2" Long	(2)
12.	AN960-8	Flat Washer, #8	(2)
13.	MS20365-832A	Locknut, #8	(2)
14.	MIL6000-1/4	Hose, 1/4" ID	(12")
15.	MIL6000-5/16	Hose, 5/16" ID	(17")
16.	MIL6000-1/2	Hose, 1/2" ID	(33")
17.	MIL6000-3/4	Hose, 3/4" ID	(6")
18.	MM-4	Hose Clamp, 1/4"	(2)
19.	MM-5	Hose Clamp, 5/16"	(2)
20.	QS100M08H	Hose Clamp, 1/2"	(4)
21.	QS100M12H	Hose Clamp, 3/4"	(2)
22.	QS100M24H	Hose Clamp, 1-1/2"	(1)
23.	QS100M72H	Hose Clamp, 4-1/2"	(1)
24.	W-2100	"C" Channel	(10")
25.	KW-2031	Drainback Kit	(1)
26.	655528	Continental Gasket	(1)
27.	MS20074-04-46	Bolt, 1/4" X 4-3/4"	(1)
28.	W-2004	Bushing	(1)
29.	MS35333-40	Star Washer, 1/4"	(1)

Applicability: CESSNA
205, 205A
206
207, 207A

[S/N 1 -> 437]

Drawing: AFC-W317
Revision: B
Date: 06/01/05

Airwolf Parts List No. AFC-W317

Index	Part Number	Description	Quantity
30.	AN960-416	Flat Washer, 1/4"	(1)
31.	MS21919WDG-05	Adel Clamp, 5/16" Long	(1)
32.	MS21919WDG-30	Adel Clamp, 1-7/8" Long	(1)
33.	CAT-7	Duct, 1-3/4"	(28")

AIRWOLF INSTALLATION INSTRUCTIONS AFC-W317

*Note A: Some hoses or wires may have to be rerouted so the air/oil separator will fit into position.
Reference and material per AC 43.13-1B & 2A.*

WARNING: ALL HOSES SHALL BE LOCATED AT LEAST 4.0" FROM ANY HEAT SOURCE LIKELY TO CAUSE VAPORIZATION OF THE OIL.

01. Cut the existing 3/4" breather tube 1.0" forward of the rear engine baffle and remove the aft section from the baffle down to the cowl flap.
02. Plug the old breather tube hole in the rear baffle.
03. Remove the existing 2.0" dia. flange in the right rear baffle leading to the aux. fuel pump.
04. Align the W-2024 doubler on the right side, rear baffle with the left edge of the doubler 2.0" inboard of the vertical bend at the #1 cyl. Rocker cover attach point. Align the lower edge of the doubler with the lower edge of the existing rear baffle.
05. Clamp the doubler in place and match drill all holes forward through the rear baffle.
06. Align the W-2041 Brace on the fwd. side of the rear baffle, between the rear baffle and the side baffle, with the flanged edges facing outward.
07. Align the upper flange of the W-2041 brace with hole "X" drilled in step 5 (see below). Match drill the flange to the hole.

Note B: Allow sufficient edge distance to install the area washer (Item 27) upon assembly.

08. Install the W-2011 bracket to the rear baffle, doubler, and brace assy., using (1) ea of #10 screw, washer, & locknut. Align the bracket with the notches upward and insert the screw through the upper right ("X") hole.
09. Slide the 4-1/2" clamp under the W-2011 bracket and secure the bracket using an additional (3) ea of #10 screws, washers, & locknuts.
10. Secure the upper left corner of the W-2042 doubler using (1) ea of #10 screw, washer, & locknut.
11. Slide the W-2043 flange aft through the 2.0" hole drilled in step 5.
12. Match drill the flange to the (3) holes around its perimeter, and secure it with (3) each of #8 screws, washers, & locknuts.
13. Install the rocker cover modification kit on the #1 cyl. Rocker cover in accordance with KW-2031. Use the new TCM 65528 gasket upon re-installation.
14. Install the AirSyphon Pump to the modified rocker cover with the tubes pointing aft.
15. Secure the AirSyphon Pump to the rocker cover using (1) each of items -46 Bolt, W-2004 Bushing, -40 Washer, -41 Lock Washer, & -5 Adel clamp.

*Note A: Some hoses or wires may have to be rerouted so the air/oil separator will fit into position.
Reference and material per AC 43.13-1B & 2A.*

WARNING: ALL HOSES SHALL BE LOCATED AT LEAST 4.0" FROM ANY HEAT SOURCE LIKELY TO CAUSE VAPORIZATION OF THE OIL.

17. Install the AirSep to the W-2011 bracket with the 3/4" inlet tube facing forward through the hole drilled in step 5. Secure with the 4-1/2" clamp just below the flanged split line of the AirSep.

18. Connect the 3/4" hose between the modified engine breather tube and the 3/4" inlet of the AirSep. Secure with 3/4" clamps.

19. Connect one end of the 1/2" hose to the exhaust side of the vacuum pump and secure with a 1/2" clamp.
Note: Rotation of the exhaust fitting may be necessary.

20. Connect the remaining end of the 1/2" hose to the Air-Tee and secure with a 1/2" clamp.

Note C: Observe proper direction of Air-Tee (see drawing).

21. Connect the Air-Tee to the 1/2" inlet of the AirSep using the 1/2" hose and secure with a 1/2" clamp.

22. Install the 5/16" hose between the diagonal leg of the Air-Tee and the 5/16" inlet to the Air Siphon Pump. Secure with a 5/16" clamps.

23. Install the 1/4" hose between the 1/4" drain of the AirSep and the 1/4" branch of the AirSyphon Pump. Secure with a 1/4" clamps.

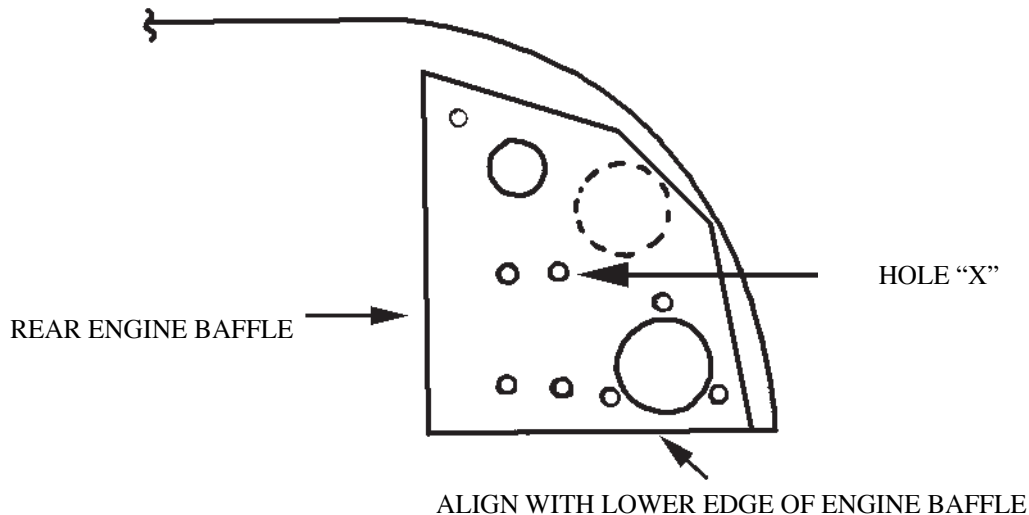
24. Install the 1-3/4" duct to the bottom of the AirSep and secure with 1-1/2" clamp.

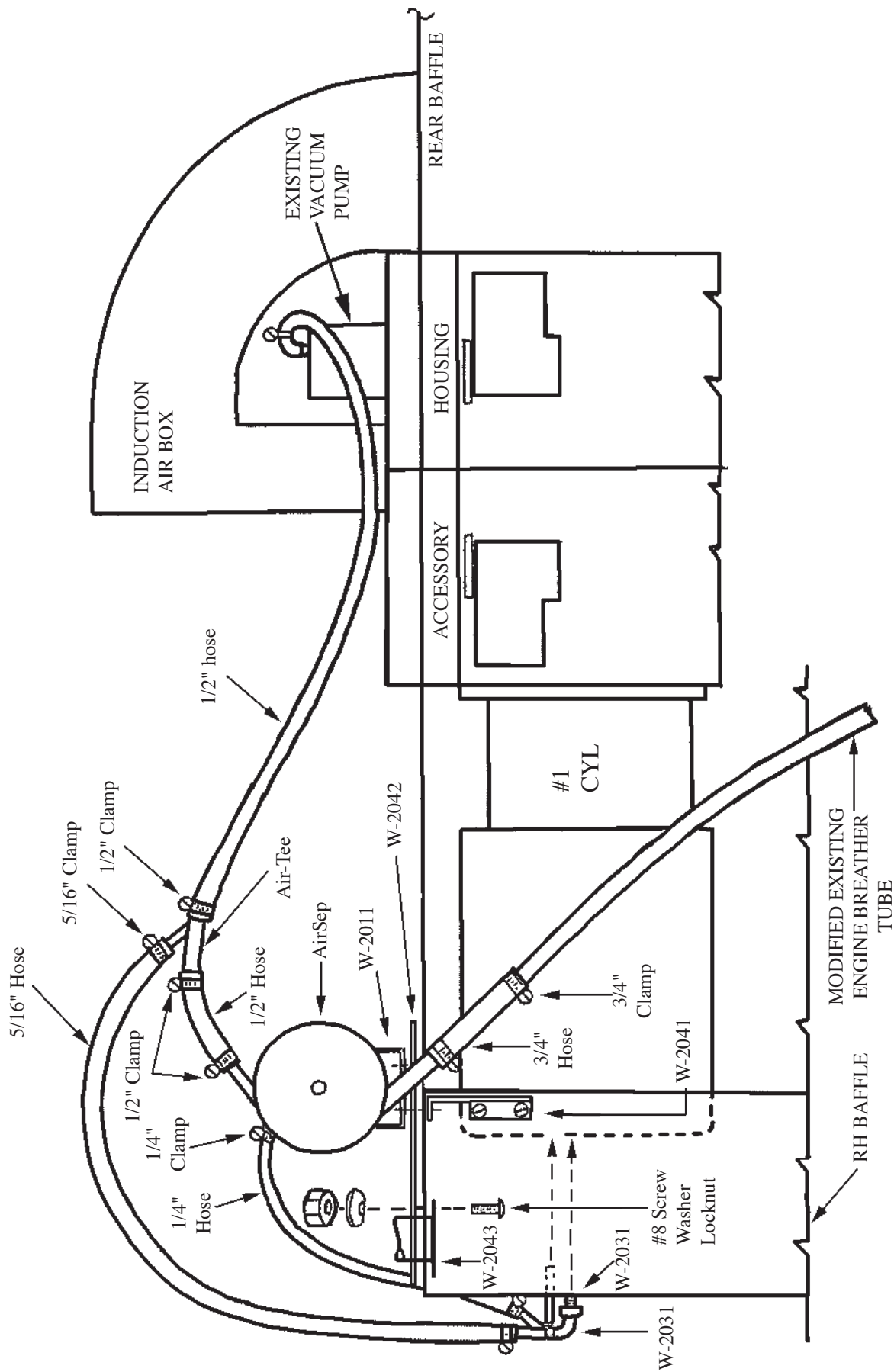
25. Secure the lower end of the 1-3/4" duct to the engine mount super structure using -30 adel clamp and #10 screw, washer and locknut.

Note D: The lower end of the duct must not extend into the slipstream or lower cowl flap area.

25. Secure all lines, hoses, and ducts using good shop practices to avoid contact with belts, pulleys, exhaust stacks, etc.

26. Determine weight & balance, initiate Form 337, and update the equipment list.





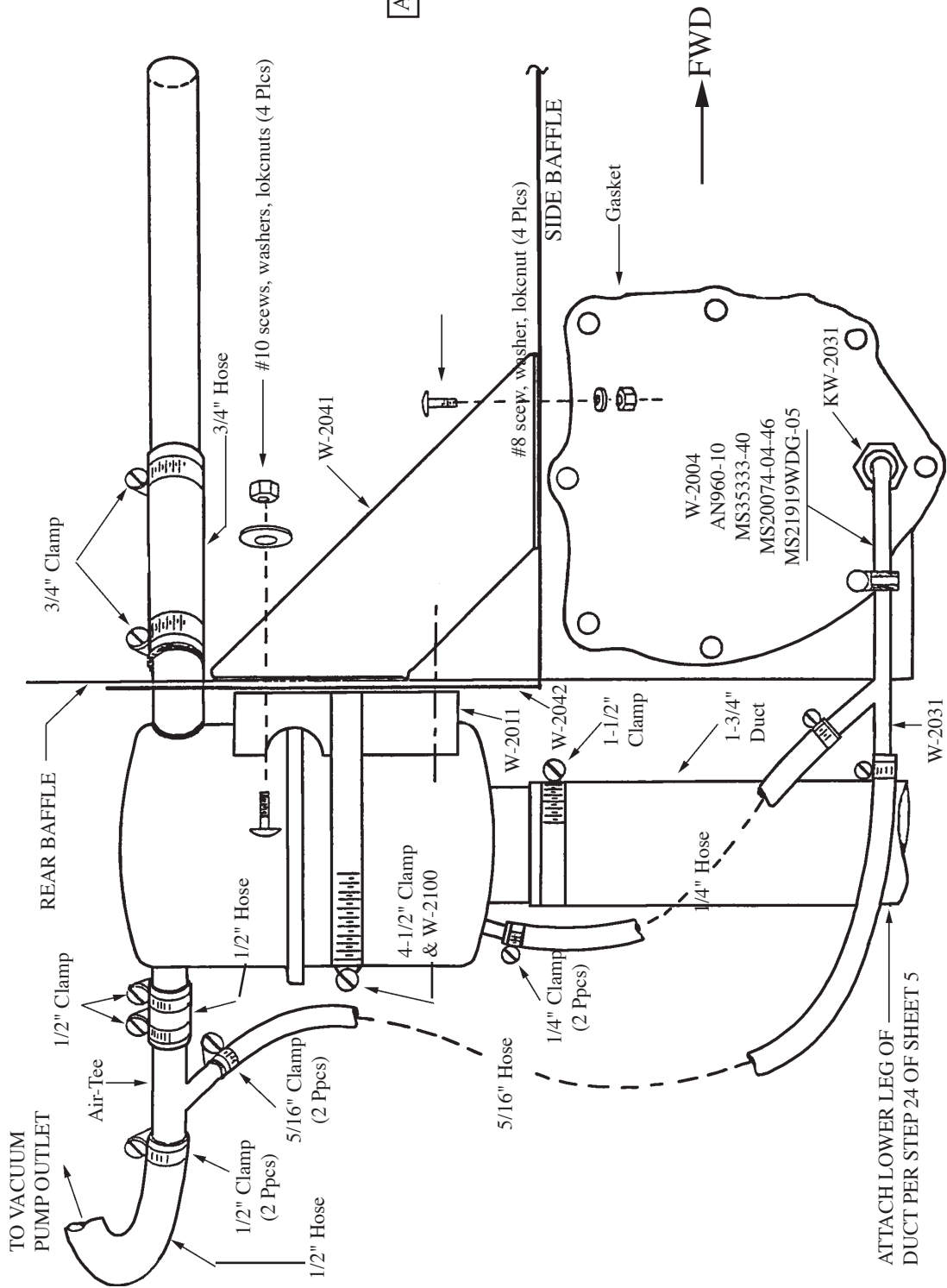
WARNING: ALL HOSES SHALL BE LOCATED AT LEAST 4.0" FROM ANY HEAT SOURCE LIKELY TO CAUSE VAPORIZATION OF THE OIL.

Applicability:

CESSNA
205, 205A
206
207, 207A

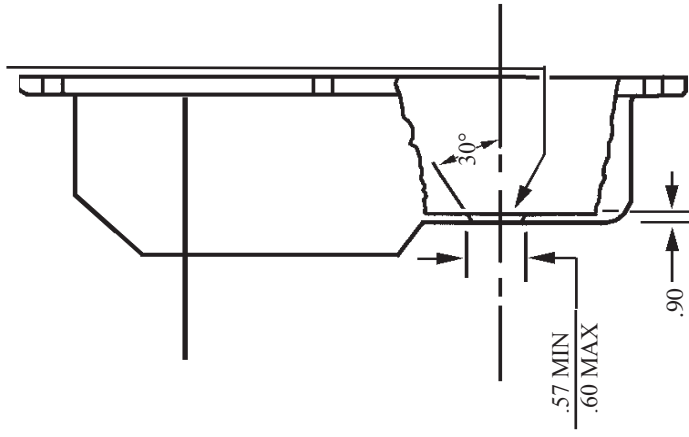
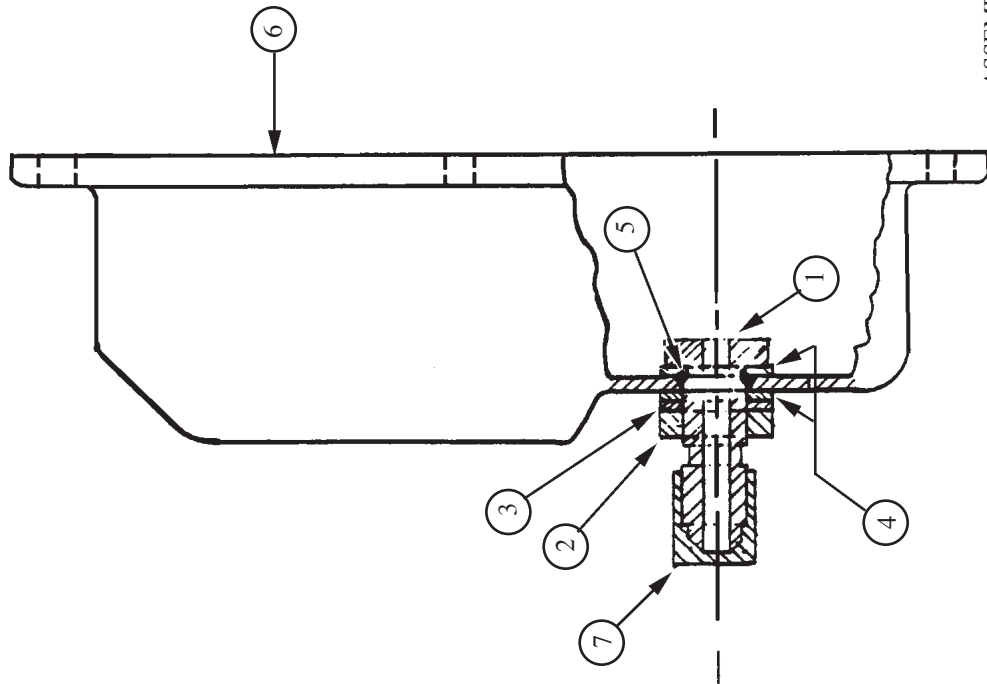
Drawing: AFC-W317
Revision: B
Date: 06/01/05

[S/N 1 -> 437]



ITEM 9.
THIS FLANGE IS NOT
SHOWN FOR CLARITY OF
DRAWINGS.
See Sheet 2&4 for location.

WARNING: ALL HOSES SHALL BE LOCATED AT LEAST 4.0" FROM ANY HEAT SOURCE LIKELY TO CAUSE VAPORIZATION OF THE OIL.



DRAWING: DLW-2031

ASSEMBLY INSTRUCTIONS:

1. DRILL ROCKER BOX COVER PER SHEET 2.
2. INSTALL ITEM 4 ONTO ITEM 1.
3. INSTALL ITEM 5 ONTO ITEM 1, AGAINST ITEM 4.
4. INSTALL ITEM 1 INTO DRILLED HOLE IN ROCKER BOX COVER FROM INSIDE POINTING OUTWARD.
5. INSTALL IN ORDER, ITEM 4, 3, & 2, ONTO ITEM 1 AND TIGHTEN.
6. INSTALL ITEM 7 ONLY IF NO AIR/OIL SEPARATOR IS TO BE INSTALLED AT THIS TIME.

NOTE:
THIS RETURN FITTING IS APPROVED ONLY FOR RETURNING OIL FROM THE FAA APPROVED AIRWOLF AIRSEP.

QTY	ITEM	PART#	DESCRIPTION
1	7	AN20-5D	Blockoff Cap, -5 [Not Included]
1	6	625615	Rocker Box Cover [Not Included]
1	5	M83248/1-013	Viton O-Ring, 1/2"
2	4	AN960-PD816	Flat Washer, 1/2"
1	3	MS35333-44	Lock Washer, 1/2"
1	2	AN924-5D	Nut, -5
1	1	AN832-5D-SP	Bulkhead Fitting, -5